

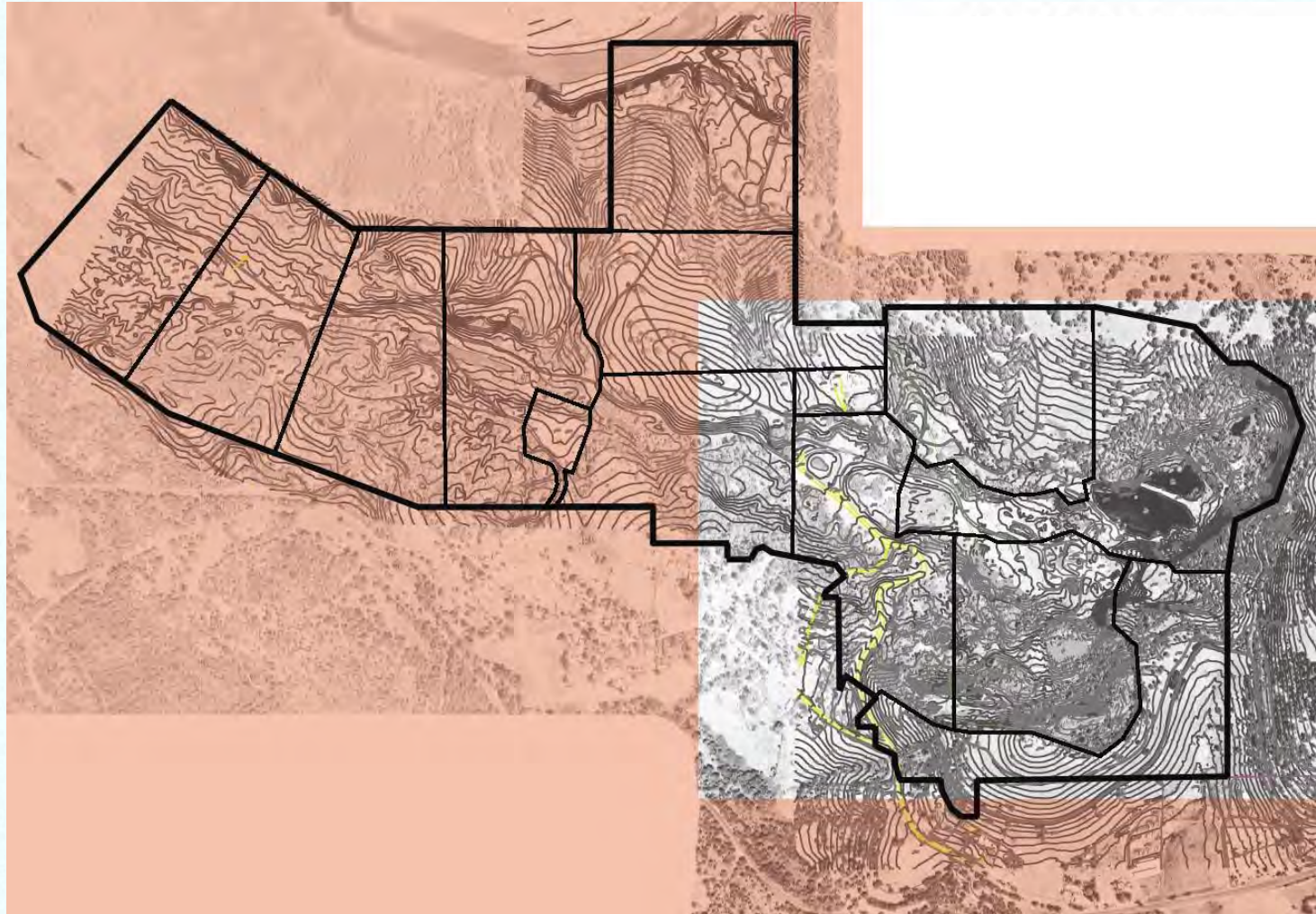
A landscape photograph showing a large, light-colored rock face, likely a mine site, with surrounding vegetation and a clear blue sky. The rock face is the central focus, with green trees and shrubs in the foreground and background. The sky is a clear, bright blue.

# **Reclamation Plan for Blue Point Mine Cal. State Mining & Geology Board**

**January 12, 2006**

**Prepared by Brian Bisnett, ASLA**

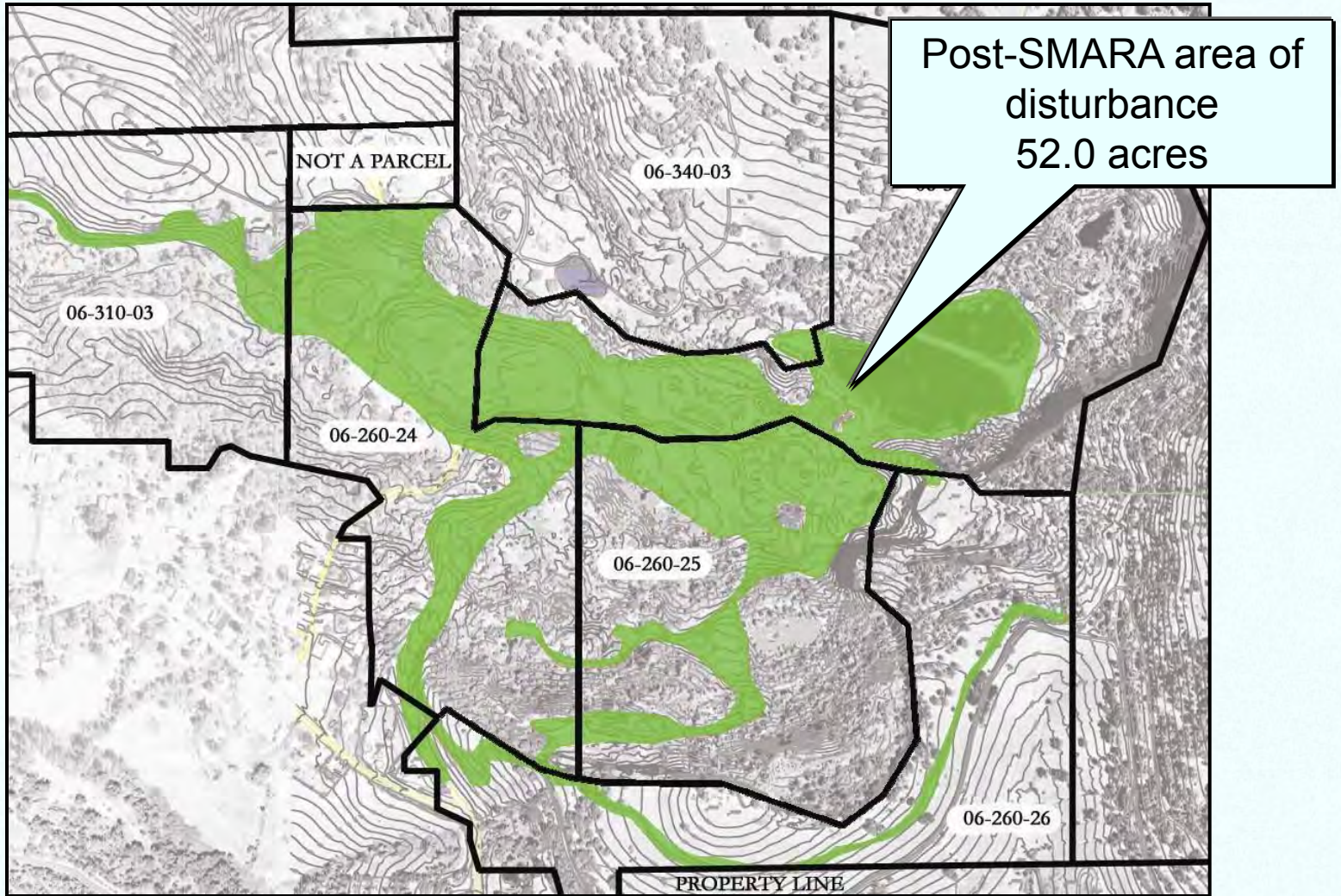
**Blue Point Mine**  
CA ID #91-58-0021



**Bluepoint Mine**

# Blue Point Mine

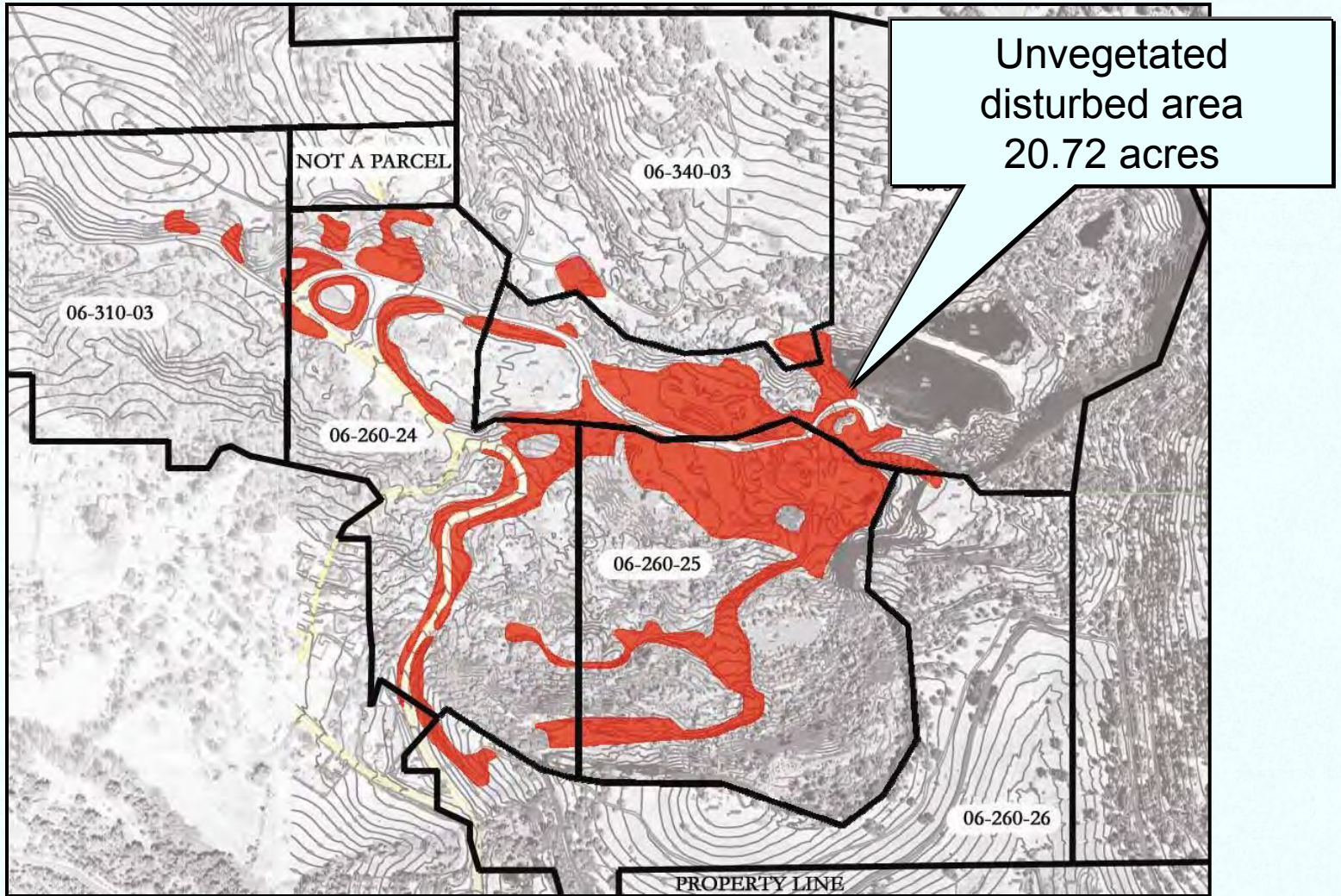
CA ID #91-58-0021



# Bluepoint Mine

# Blue Point Mine

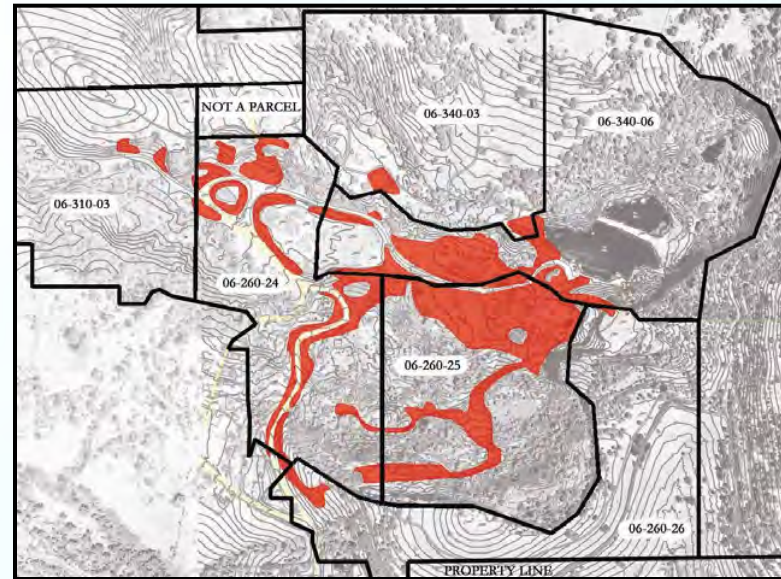
CA ID #91-58-0021



# Bluepoint Mine

# Reclamation Objectives

- **Control Erosion**
  - Maintain existing detention basins
  - Add additional detention basin
  - Line drainage swale at haul road with cobble
  - Culvert concentrated run-off into detention basin
  - Grade slopes to less than angle of repose
    - Fill slopes less than 3:1
    - Cut slopes less than 2:1
  - **Revegetate exposed surfaces per COA**



# Reclamation Objectives

- **Protect Water Quality**
  - Existing haul road to be graded with v-ditches and  $\frac{3}{4}$ " AB baserock 2" deep
  - Run-off to be routed through detention basins prior to entering historic drainage tunnels
  - Culvert to be cleaned & rip-rap placed at pond overflow per COA
  - **Storm Water Prevention Plan to be prepared per COA**



# Reclamation Objectives

- **Remove debris**
  - Old mining equipment
  - Abandoned vehicles
  - Trash
  - Scrap metal
  - Trailer
- All have been removed



# Reclamation Objectives

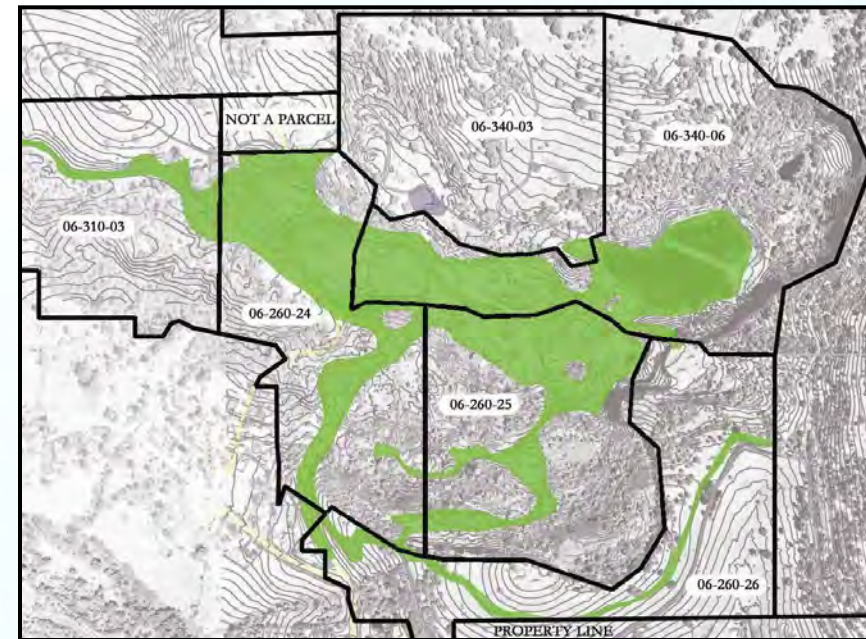
- **Preserve Pre-SMARA Historic Resources**
  - Hydraulic escarpment
  - Drainage tunnels
  - **‘Chinese’ stacked stone walls & other mining artifacts**



# Reclamation Objectives

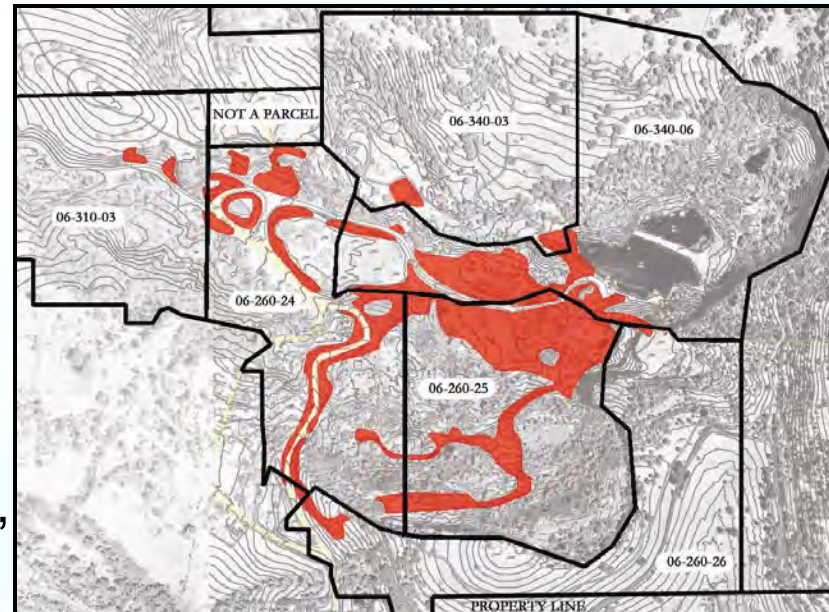
- **Protect Biotic Resources**

- Existing ponds and associated vegetation
- Swallow nesting habitat
- Existing trees and shrubs



# Reclamation Objectives

- **Revegetate Exposed Portions of Site**
  - Trees, shrubs & hydroseeding per table A of OMR Conditions of Approval
  - Irrigation to be provided to tree and shrub seedlings per COA
  - Soil preparation per COA
    - Ripped to 12”
    - Track-walked
    - Top-dressed with stockpiled sand, fertilizer and weed-free straw
  - Revegetation success criteria per COA table B to be applied
  - Weed abatement controls per COA table C to be applied



# Reclamation Objectives

- **Protect Public Safety**
  - Provide ‘bat gates’ and fencing around openings to drainage tunnels per COA
  - **Provide fencing and signage above hydraulic mining bluffs per COA**



A landscape photograph showing a large, light-colored rock face, likely a mine site, with surrounding vegetation and a clear blue sky. The rock face is the central focus, showing signs of excavation or natural erosion. The foreground is filled with green trees and shrubs, and the background shows a clear blue sky.

# **Reclamation Plan for Blue Point Mine Cal. State Mining & Geology Board**

**January 12, 2006**

**Prepared by Brian Bisnett, ASLA**